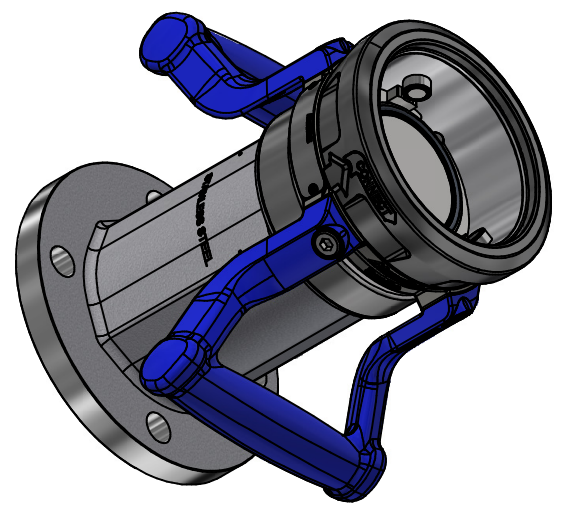
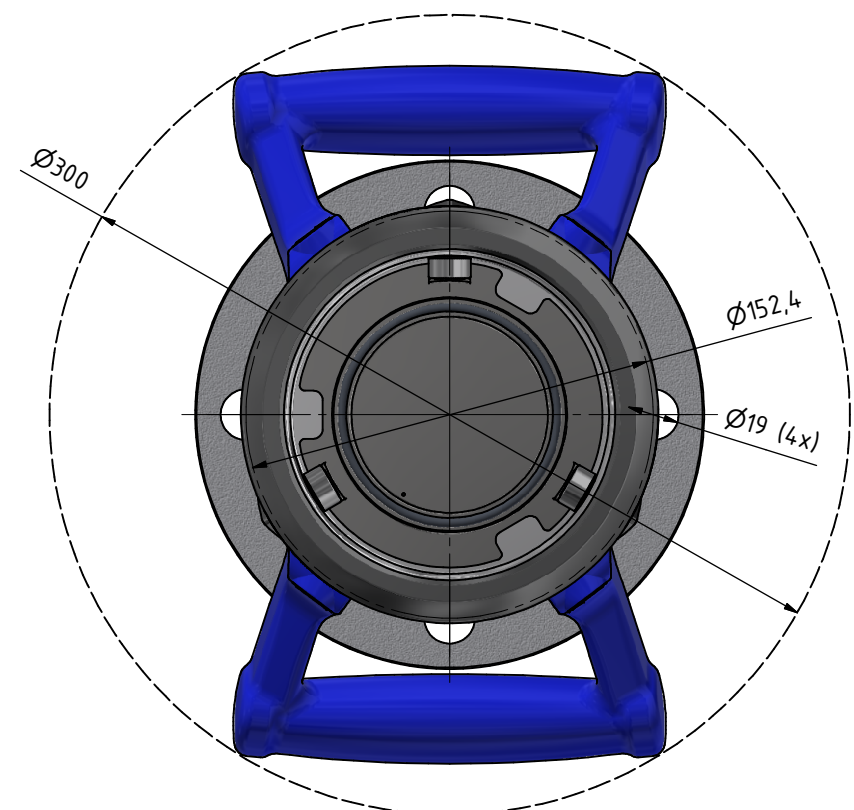
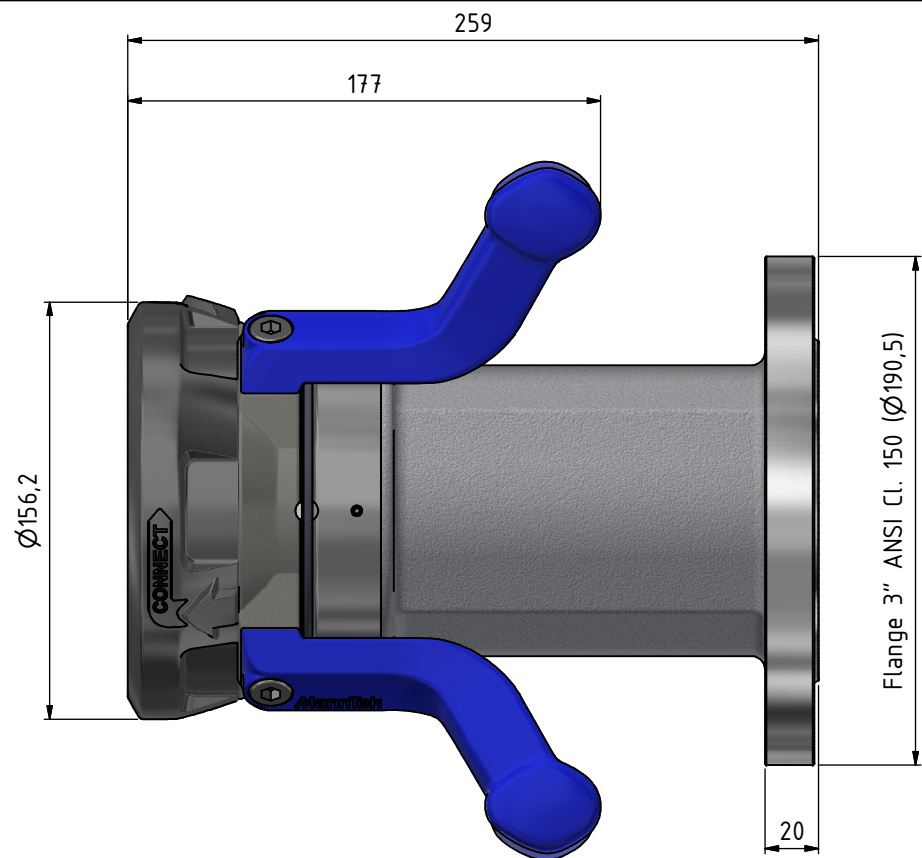


Notice: This drawing contains proprietary information and shall not be used or reproduced or its contents disclosed in whole or in part, without the prior written consent of the Mann-Teknik AB



| NO. | Revision comprises | Date | Sign. | Appr by |
|-----|--------------------|------|-------|---------|
| | | | | |

| Detail No: | Material | Ämne/Blank | Ytbeh./Treatment | Vikt/Weight |
|--|------------------------------------|--------------------|---|---------------------|
| MannTek | Designed/drawn by J. Gustafsson | Scale: 1 : 2 | Dimension with no tolerances acc to Machined SS-ISO 2768-1 medium Weld Forge SS-ISO 2768-1 coarse Surface roughness SS-ISO 1302 Form & position tol SS-ISO 2768-2-K | |
| | Checked G. Kopplin | Date 2023-08-17 | | |
| | Approved M. Bäckström | | | |
| Hose unit 3" - DDC Flange 3" ANSI Cl. 150 | | | Data nr./Comp No. 4S61B4401A | Blad/Sheet 1 / 1 |
| | | | Drawing No. 4S61B4401-1 | Rev. |